

PREFORMED INSULATION SHELLS FOR 2 WAYS AND 3 WAYS BALL VALVES

**Fast and easy to fit and remove.
With little cost, adequate insulation and
protection against condensation.**

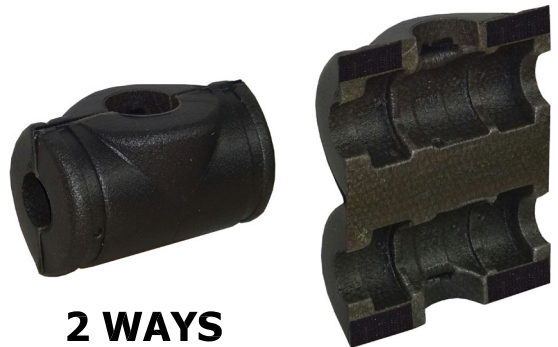
Cross Linked Polyethylene – Closed Cell Foam Insulating Shells with high insulating capacity due to its low thermal conductivity, λ below **0.04 W/mK**.

Insulating shells are made by two layers of Cross Linked Polyethylene with the outer layer **scratch-proof**.

A noticeable reduction of the primary energy requirement of buildings is achieved by using insulation shells resulting on an economic advantage for end users.

Moreover on cooling circuits insulation measures against condensate formation need to be taken into consideration. Use of insulating shells prevents such technical issues avoiding damp to condensate on valve surface.

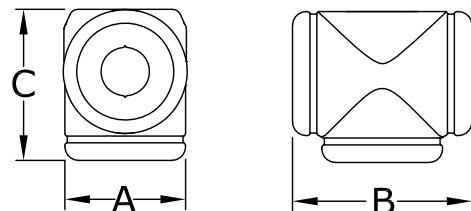
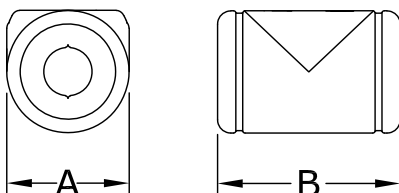
Finally **adhesive fasteners** ensure a simple and efficient sealing of the Insulating shell and a quick opening for maintenance or replacement of the body valve.



2 WAYS



3 WAYS



2 WAYS	A	B
1/2" - 3/4"	83	135
1"	86	140
1" 1/4	95	140
1" 1/2	105	160

3 WAYS	A	B	C
1/2" - 3/4"	83	132	105
1"	86	140	115
1" 1/4	95	140	120
1" 1/2	105	160	140

APPLICATIONS



2 AND 3 WAYS VALVES
WITH FEMALE OR PIPE
UNIONS ATTACHMENTS



Practical adhesive fastener
for opening and closing



Grooves for cable ties



CODE	2 WAYS
GC02	1/2" - 3/4"
GC12	1"
GC22	1" 1/4
GC42	1" 1/2

CODE	3 WAYS
GC03	1/2" - 3/4"
GC13	1"
GC23	1" 1/4
GC43	1" 1/2



VALVE WITH SPACER



REGULATION VALVE



VALVE WITH MANUAL
OVERRIDE SPACER