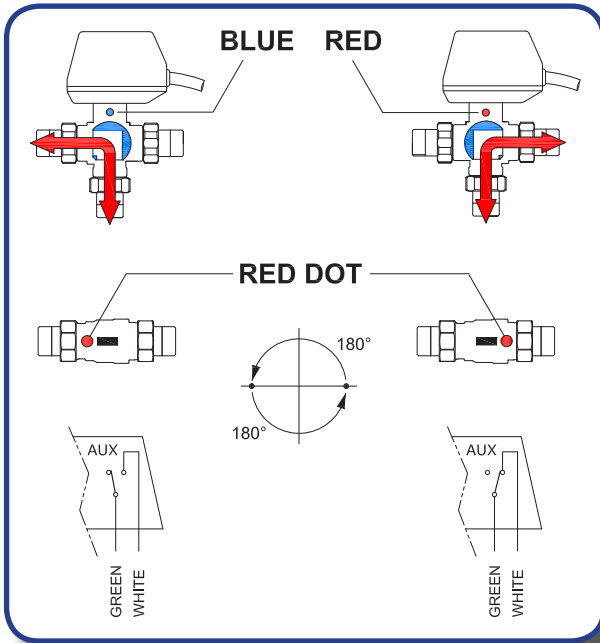


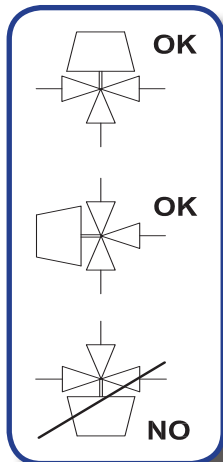
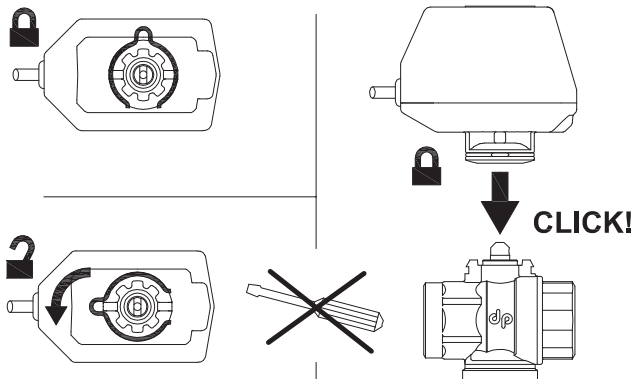
# MOTORIZED BALL VALVE 3-WAYS DIVERTER "L" TYPE

## INSTRUCTION SHEET

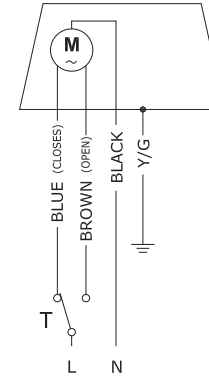
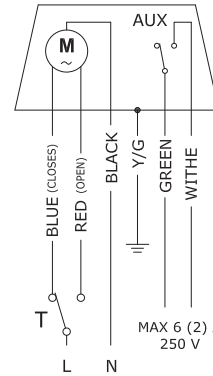


SUITABLE FOR WATER OR LIQUIDS COMPATIBLE WITH **PTFE** AND **EPDM**. PRIOR TO INSTALLATION, ENSURE THAT THE HYDRAULIC CIRCUIT IS CLEANED OF SOLIDS SUCH AS WELDING OR THREAD RESIDUES.

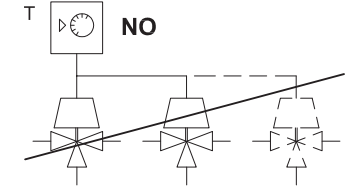
<b>Environment temperature</b>	min. 0 °C max 65 °C
<b>Fluid temperature</b>	min. 0 °C max 110 °C
<b>Pressure rating</b>	16 bar
<b>Differential pressure</b>	max 6 bar
<b>Electrical protection</b>	IP 54



230 Vac	24 Vac	rotat. time	230 Vac	24 Vac
M6B3	M6C3	60" x 180°	M6A3	M6S3
M6B3L	M6C3L	120" x 180°	M6A3L	M6S3L
M6B3W	M6C3W	30" x 180°	M6A3W	M6S3W
M6B3X	M6C3X	16" x 180°	M6A3X	M6S3X

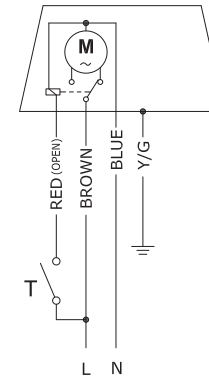
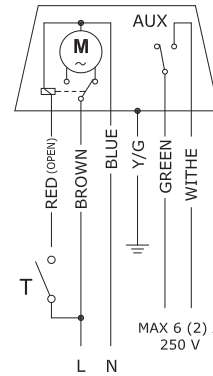


### 3-WIRES CONTROL M6(...)

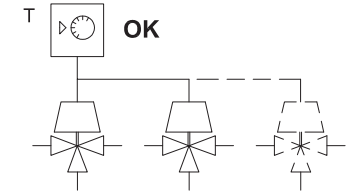


SEVERAL SERVOMOTORS WITH **3-WIRES CONTROL M6(...)** **CANNOT BE CONNECTED IN PARALLEL** TO A SINGLE THERMOSTAT/CONTROL.

230 Vac	24 Vac	rotat. time	230 Vac	24 Vac
R6B3	R6C3	60" x 180°	R6A3	R6S3
R6B3L	R6C3L	120" x 180°	R6A3L	R6S3L
R6B3W	R6C3W	30" x 180°	R6A3W	R6S3W
R6B3X	R6C3X	16" x 180°	R6A3X	R6S3X



### 2-WIRES CONTROL R6(...)



SEVERAL SERVOMOTORS WITH **2-WIRES CONTROL R6(...)** **CAN BE CONNECTED IN PARALLEL** TO A SINGLE THERMOSTAT/CONTROL.

The informations in this document are intended for the company responsible for installation and maintenance. The hydraulic and electrical installation operations must be carried out by qualified personnel, in accordance with the laws and regulations of each country where the product is destined. The product must only be used in the application context for which it has been designed. De Pala srl, in the continuous process of improving its products, reserves the right to make any technical, dimensional and aesthetic changes it deems necessary without prior notice.