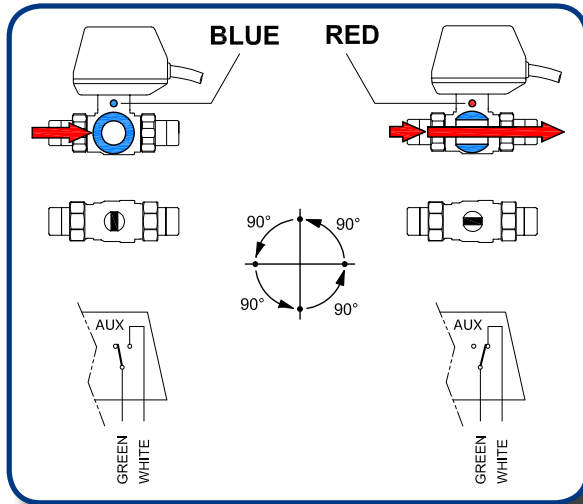


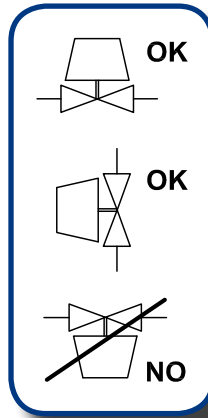
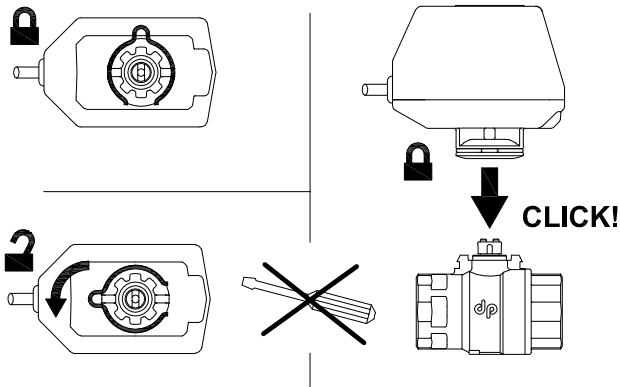
# MOTORIZED ZONE VALVE 2 WAYS

## OPERATING INSTRUCTIONS



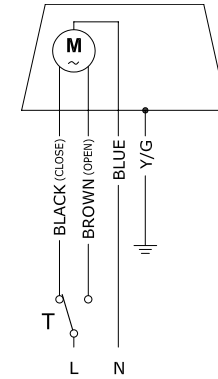
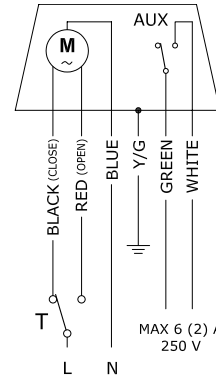
Utilisable fluids: water or liquids compatible with PTFE and EPDM. Before installing the valve be sure that no solid residues, like welding or threading residues, remain in the hydraulic circuit.

<b>Ambient temperature</b>	min. 0 °C max 65 °C
<b>Fluid temperature</b>	min. 0 °C max 110 °C
<b>Operating pressure</b>	max 16 bar
<b>Differential pressure</b>	max 6 bar
<b>IP rating</b>	IP 54

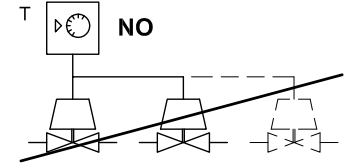


**GUARANTEE** - The Seller warrants each new servomotor to be free from defects in material, workmanship and construction, and that when installed and used in accordance with this technical datasheet will perform to applicable specifications for a period of two years from the date of delivery. If examination by the Seller discloses that the product has been defective, then its obligation is limited to repair or replacement, at its option, of the defective product or its components. The Seller is not responsible for products which have been subject to misuse, alteration, accident or for repairs not performed by the Seller. Products must be returned properly packed with transportation charges prepaid to the Seller; return delivery terms will be DDP Seller's Factory. The foregoing warranty constitutes the Seller sole liability, and is in lieu of any other warranty, of merchantability or fitness. The Seller shall not be responsible for any incidental or consequential damages arising from any breach of warranty.

230 Vac	24 Vac	op. time	230 Vac	24 Vac
M6B2N	M6C2N	60" x 90°	M6A2N	M6S2N
M6B2VN	M6C2VN	30" x 90°	M6A2VN	M6S2VN
M6B2WN	M6C2WN	15" x 90°	M6A2WN	M6S2WN
M6B2XN	M6C2XN	8" x 90°	M6A2XN	M6S2XN

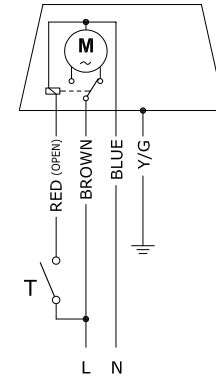
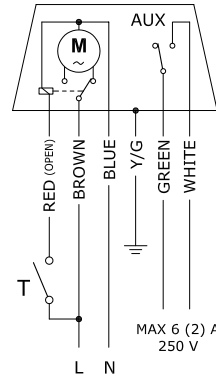


### 3 WIRES CONTROL M6(...)

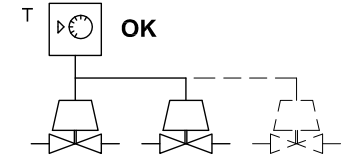


3 wires actuators **CANNOT** be connected in parallel to a single room thermostat / control unit.

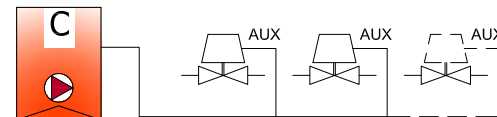
230 Vac	24 Vac	op. time	230 Vac	24 Vac
R6B2	R6C2	60" x 90°	R6A2	R6S2
R6B2V	R6C2V	30" x 90°	R6A2V	R6S2V
R6B2W	R6C2W	15" x 90°	R6A2W	R6S2W
R6B2X	R6C2X	8" x 90°	R6A2X	R6S2X



### 2 WIRES CONTROL R6(...)



2 wires actuators **CAN** be connected in parallel to a single room thermostat / control unit.



**Auxiliary switches** of different servomotors can be connected in parallel to the boiler; the first switch closing will start the boiler, the last switch opening will stop the boiler.